

## 9008 EVANSTON NW - SEATTLE

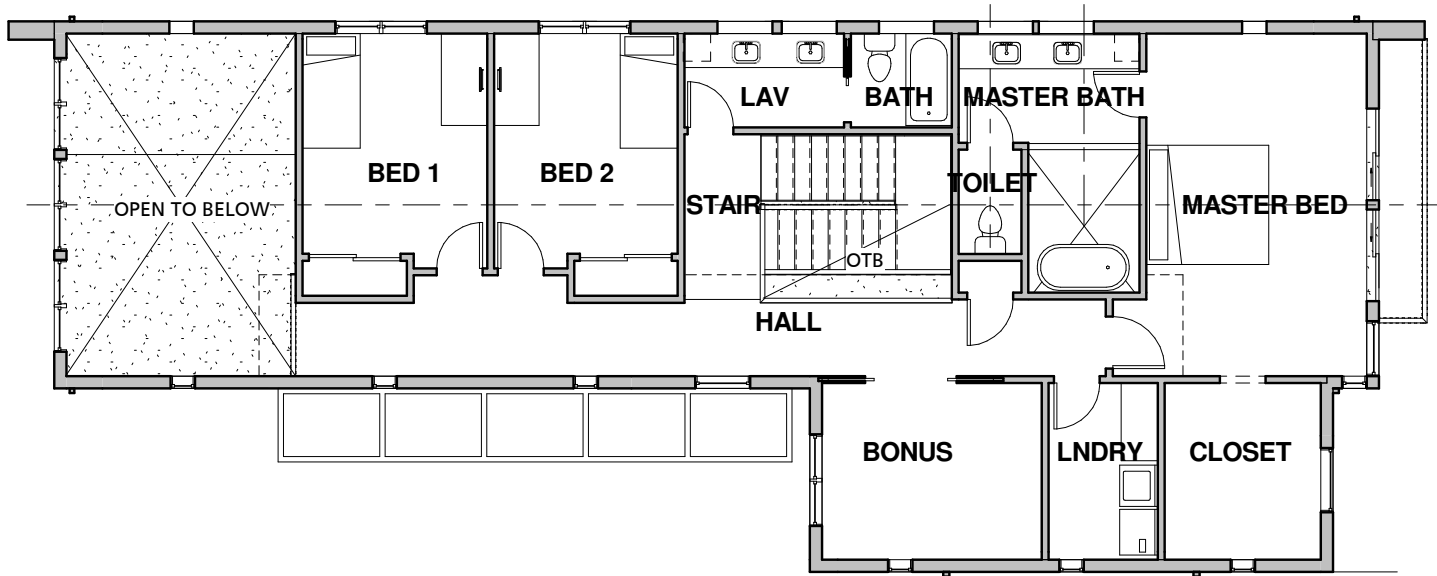
Flooded with cheer, courtesy of soaring windows and generous, light-filled spaces that span over two living levels, and refreshing interiors that combine sustainable and healthful components with modernist design; this is the home you've been dreaming of. The kitchen is airy and light with a large island clad in vintage oak, premium appliances, a Butler's pantry, and honed marble and granite counters providing a modern edge of amenities for the way we live now. Step outside to your private, outdoor oasis; a red brick patio and a natural gas stub for your grill, is surrounded by lovely landscaping and ready for dining al-fresco.



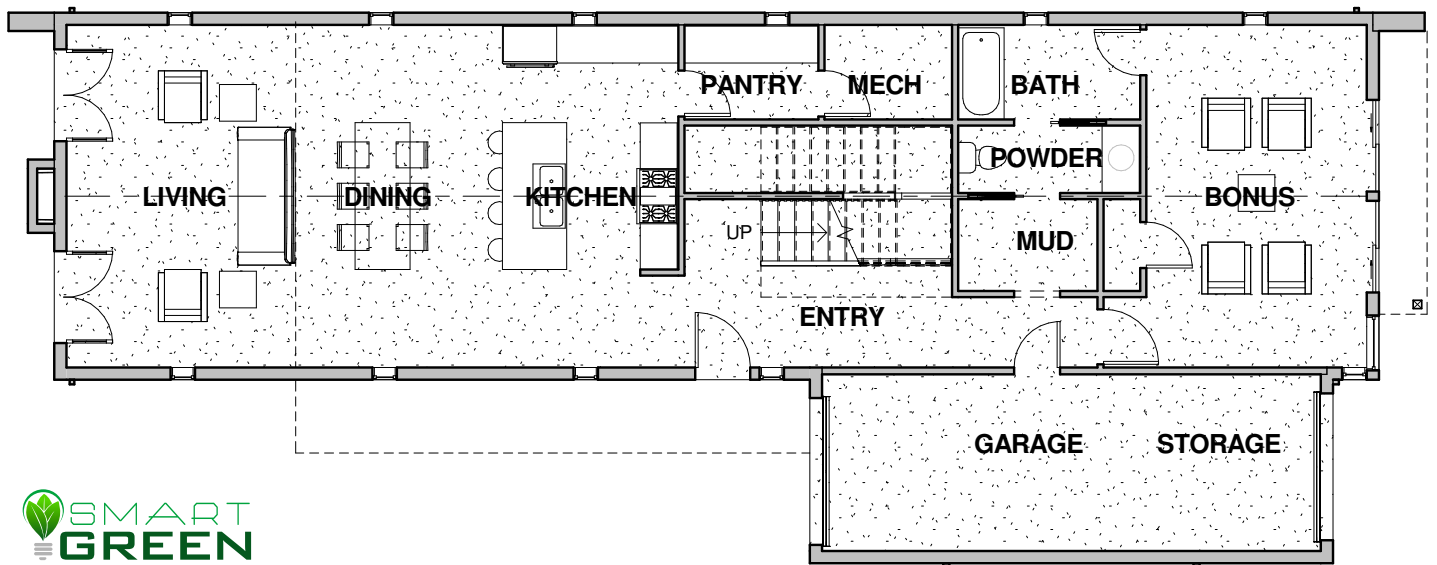
- Healthful Indoor Air & Lower Energy Consumption
  - No VOC Paints, Stains & Finishes
  - High-Performance Low-E triple pane windows
  - Prepped for Solar & EV Charging
  - Heat Recovery Ventilation System
  - Thick Framed & Insulated Walls
  - In-Floor Radiant Heat and Heated Floors
  - WaterSense Plumbing Fixtures
  - Real Stone slab and tile accents
  - Farmhouse Style Kitchen with Center Island
  - Locally made Cabinets & Stainless Steel Appliances
  - Hardwood & Polished Concrete Floors
- > 4 Bedroom
  - > 3 Bathrooms
  - > Approx 3000 sq ft (plus garage)
  - > Lot Size 4866 sq ft
  - > Entertainment Patio and Yard
  - > Attached Garage and Storage
  - > Two Bonus Rooms
  - > \$1,595,000

## 9008 EVANSTON NW - SEATTLE

Second Floor



First Floor



FOR SALES INFORMATION:



**SUSAN STASIK**  
 Managing Broker  
 Windermere Real Estate Co.  
 206.660.1012  
 susan@windermere.com

*This information is provided as a courtesy so our clients can visualize living in their new homes. Prices, floor plans, colors, components and all specifications are subject to modifications at any time. Built-Green Certification is pending. Buyers are encouraged to investigate.*

