

## “UPTOWN” KIRKLAND, WASHINGTON



### 3 UNITS

- > 4 Bedroom
- > 3.55 Bath
- > Approx 2,950 SF
- > 2-car Garage  
500 SF

Outstanding location, cutting edge design, sunset views, and first-rate quality from an award winning builder sets “Uptown” apart. This unique trio of urban-loft inspired homes from nwBuilt incorporate elements like custom-crafted steel, glass, white oak, and Carrara marble, into an exceptionally well-conceived floor plan that features sensational kitchens with 9 top-of-the-line appliances, high-end master suites and baths, and “Smart green” energy efficiency—all just a few steps from the center of Kirkland!

Each home features:

- Roof top decks perfect for entertaining and enjoying lake views
- The ultimate in healthful and energy efficient Smart Green living
- Carefully selected finishes that make nwBuilt homes stand apart
- Ample 2-car garage

# 30, 34, 38 - 6TH AVENUE, KIRKLAND, WA 98033

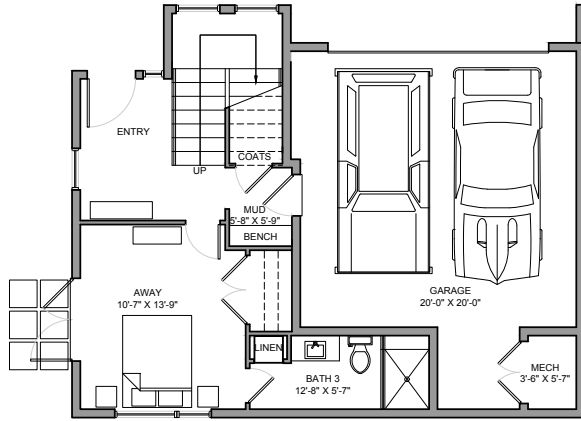
**3 UNITS**

Floorplans on all units are the same with exception that the East Unit has a reverse floorplan.

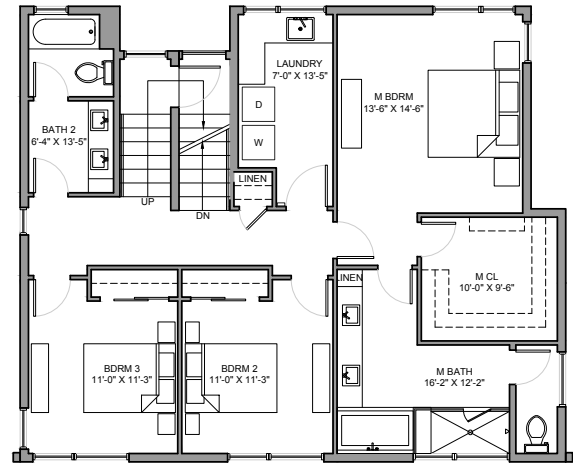
1ST FLOOR LIVING: 520 SF  
 2ND FLOOR LIVING: 1,168 SF  
 3RD FLOOR LIVING: 1,250 SF  
 APPROX. TOTAL LIVING: 3,000 ASF

GARAGE: 500 SF  
 TOTAL BLDG: 3,438 SF

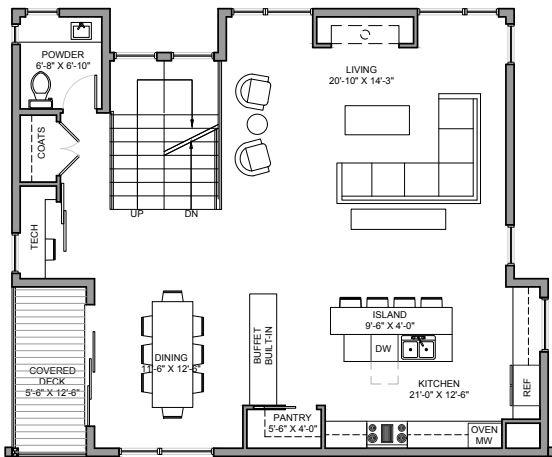
COVERED DECK: 69 SF  
 ROOF TOP DECK: 827 SF



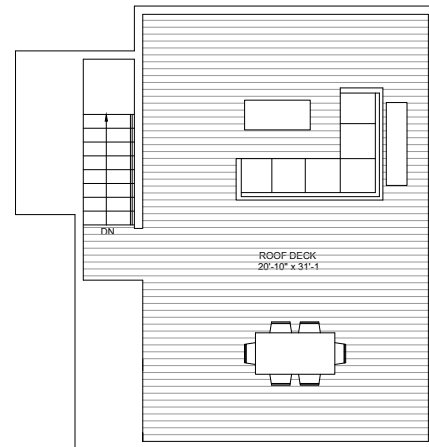
30, 34, 38 - 6TH ST- FIRST FLOOR  
 SCALE: 1/8" = 1'-0"



30, 34, 38 - 6TH ST- THIRD FLOOR  
 SCALE: 1/8" = 1'-0"



30, 34, 38 - 6TH ST- SECOND FLOOR  
 SCALE: 1/8" = 1'-0"



30, 34, 38 - 6TH ST- ROOF DECK  
 SCALE: 1/8" = 1'-0"



**FOR SALES INFORMATION:**



Dan Greenfield 206-706-9209  
 Nick Pallis 206-499-7700



*This information is provided as a courtesy so our clients can visualize living in their new homes. Prices, floor plans, colors, components and all specifications are subject to modifications at any time. Built-Green Certification is pending. Buyers are encouraged to investigate.*

