

Experience Läft, nwBuilt's latest offering of two single family loft-inspired homes in Fremont. These 3 bedroom, 3.5 bath homes are targeting 5-star built green with over 2000 finished square feet plus secured carport/garage and expansive 544 sf of roof top deck perched with a 360 degree views highlighting Lake Union, Downtown Seattle, and a wide expanse of mountains from the North Cascades to Mount Rainier.

General Features

- Stand alone, street facing lots
- All interior walls and ceilings are insulated
- Z-line industrial appliances
- Lofty finishes & custom built-ins

Highly Efficient Systems

- Watersaving plumbing fixtures
- Energy-Star appliances
- 95% efficient tankless water heater
- Comfortable In slab radiant heat
- Daiken Emura, 3 headed ductless minisplit for heating and cooling

Smart Green Features

- Targeting 5-star Built Green
- Super-Efficient Building Envelope
 - Uber Insulated:
 - 2x8 Exterior Walls
 - 4" Underslab Insulation (double code requirement)
 - R-53 Insulated roof (Code is R-38)
- Tremco Envirodri Moisture and Air Barrier
 - Contributed to super low air leakage, verified with a post built blower door test
- Highly-efficient Prime Windows

Other Smart Green Highlights

- Recycled Content Tiles and Countertops
- No VOC paints
- 2 ERV vans to bring in fresh air 24 hours/day
- Prewired for solar
- Car Charging outlet



4620 & 4628 DAYTON AVE N.

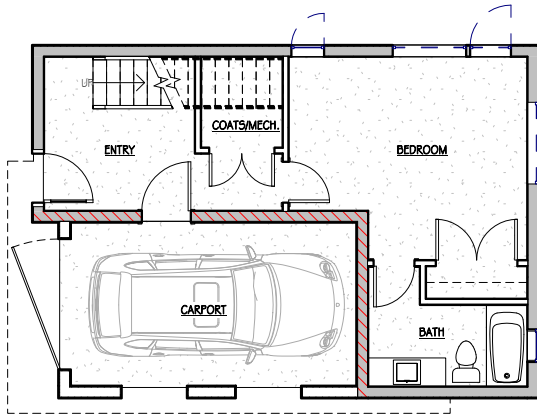
Two Single Family Homes

- 3 bedrooms
- 3.5 baths
- 2,025 sf
- Secure Carport/Garage

nwBuilt has built a reputation for premium quality and unparalleled level of finish.

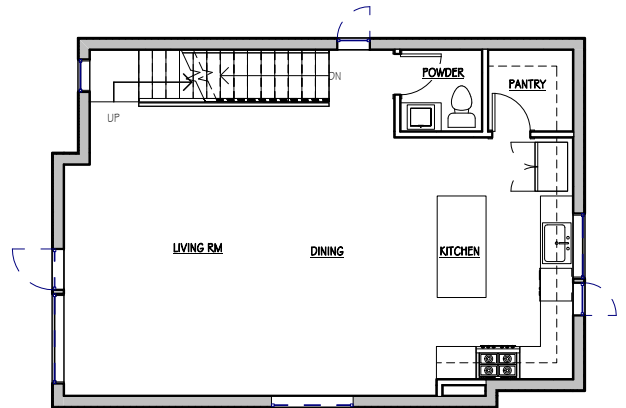
These homes are styled with an urban loft ascetic and finishes stay true to this design, through and through.

TWO UNITS: 4620 & 4628 DAYTON AVE. N.



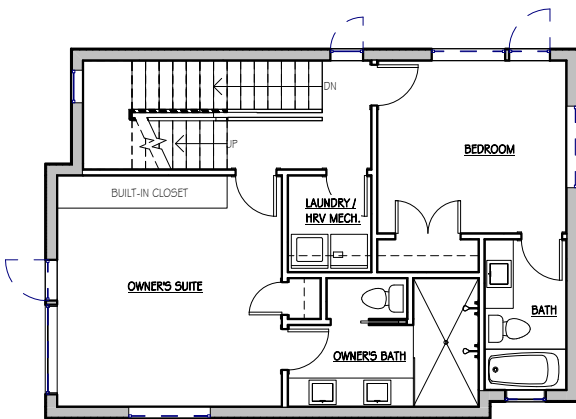
LEVEL 1

SCALE: 1/8" = 1'-0"



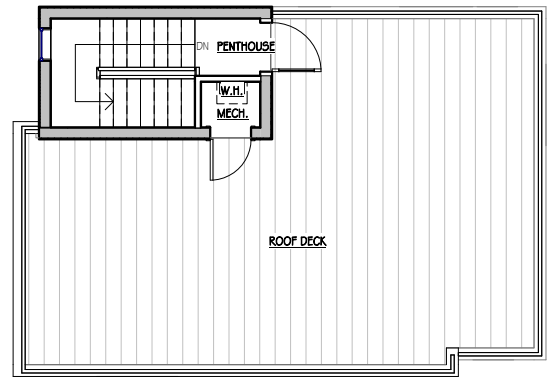
LEVEL 2

SCALE: 1/8" = 1'-0"



LEVEL 3

SCALE: 1/8" = 1'-0"



ROOF DECK

SCALE: 1/8" = 1'-0"



This information is provided as a courtesy so our clients can visualize living in their new homes. Prices, floor plans, colors, components and all specifications are subject to modifications at any time. Built-Green Certification is pending. Buyers are encouraged to investigate.

