

3420B 33RD AVE W | SEATTLE, WA

The ultimate aspiration for a discerning sophisticate who values architecture, sustainable and healthful living, location, and a minimalist lifestyle. Clean lines, openness and modernity allow this remarkable modern Stuga to celebrate what is real, true, and honest. The warm and inviting great room boasts glass sliders opening to a covered deck, and the gourmet kitchen allows easy mingling with guests. Upstairs, the serene master suite features a spa bathroom with a rain shower and a soaking tub. Warm woods, organic stone, and high-pressured polished concrete floors appear throughout the home. Perfection in every detail, this home was designed in spirit to a Scandinavian villa. Situated to optimize solar performance and positioned in a prime locale close to everything Magnolia has to offer.

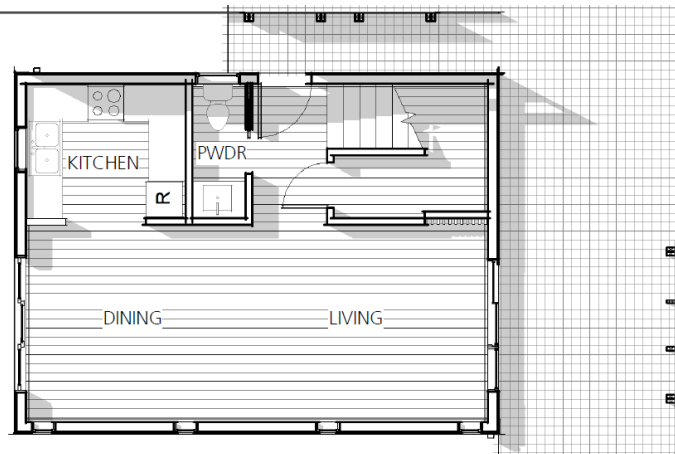


- Designed and modeled for Built Green
- Luxury modern boasting minimalism and sustainability
- Designed with maximum comfort and health in mind
- Ultimate energy-saving efficiencies
- Supreme ventilation for healthful indoor air
- No VOC paints and grouts
- High-performance Low-E windows
- Washington-made custom cabinetry
- Energy STAR appliance package
- Hardwood floors
- Slab stone countertops
- WaterSense certified plumbing fixtures
- Custom Design details throughout

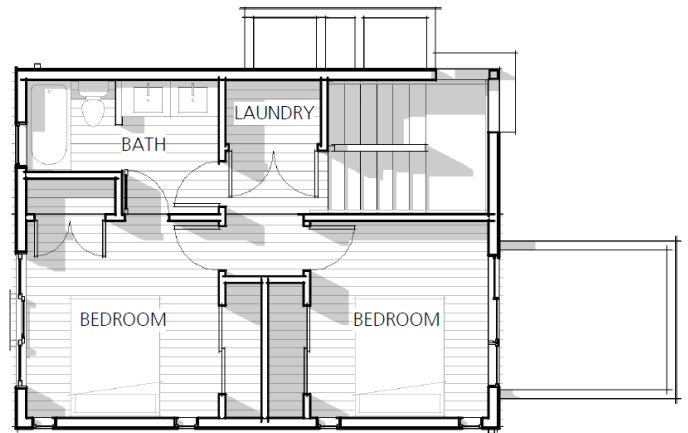
**SINGLE FAMILY HOME  
SPECIAL FEATURES:**

- > 2 Bedrooms
- > 1.5 Bathrooms
- > 1,100 Square Feet
- > Private Parking
- > Yard and Garden Space

3420B 33RD AVE W | SEATTLE, WA



FIRST FLOOR



SECOND FLOOR



**EXCLUSIVELY OFFERED FOR PRE-SALE.  
PLEASE DIRECT INQUIRIES TO:**

Susan Stasik, Managing Broker  
(206) 660-1012 • [susan@windermere.com](mailto:susan@windermere.com)

Shauna Dean, Broker  
(206) 250-3311 • [shaunadean@windermere.com](mailto:shaunadean@windermere.com)

*This information is provided as a courtesy so our clients can visualize living in their new homes. Prices, floor plans, colors, components and all specifications are subject to modifications at any time. Built-Green Certification is pending. Buyers are encouraged to investigate.*

